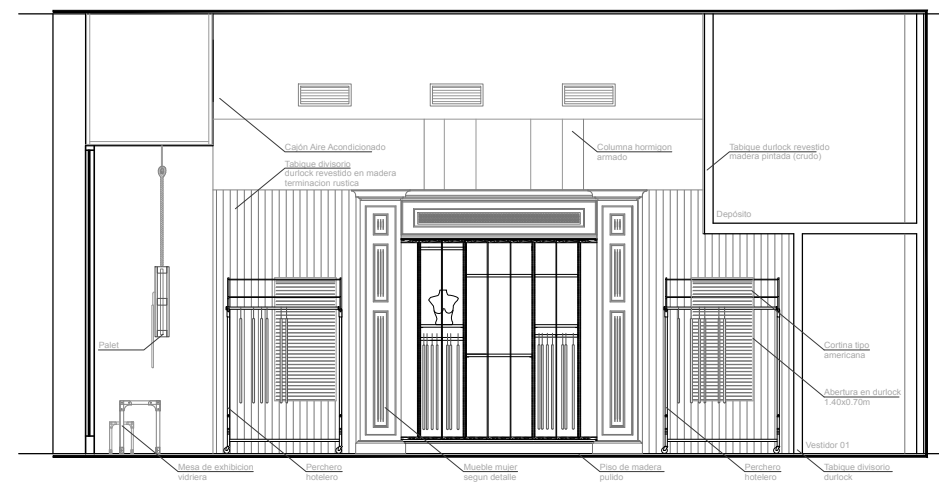
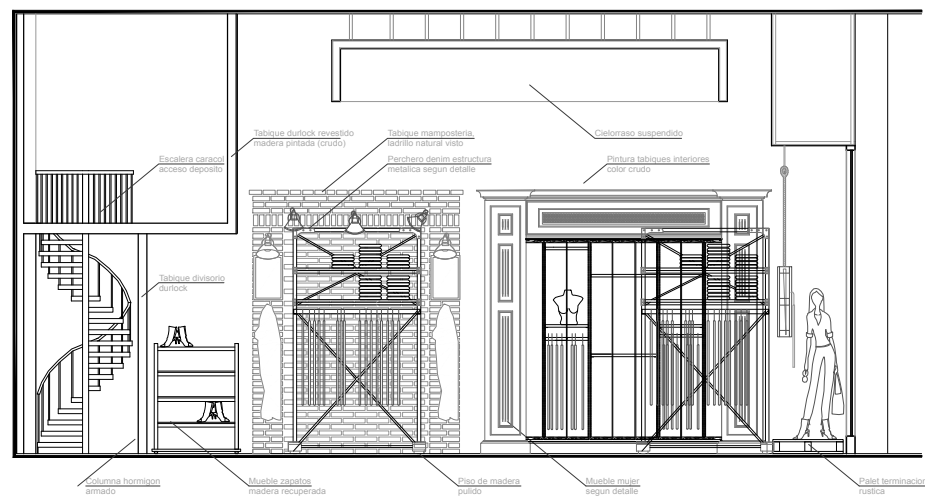
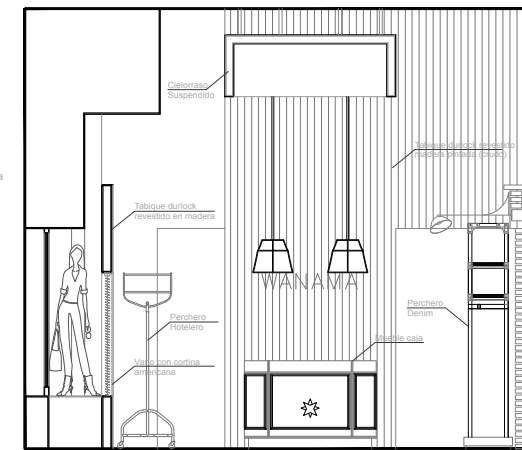
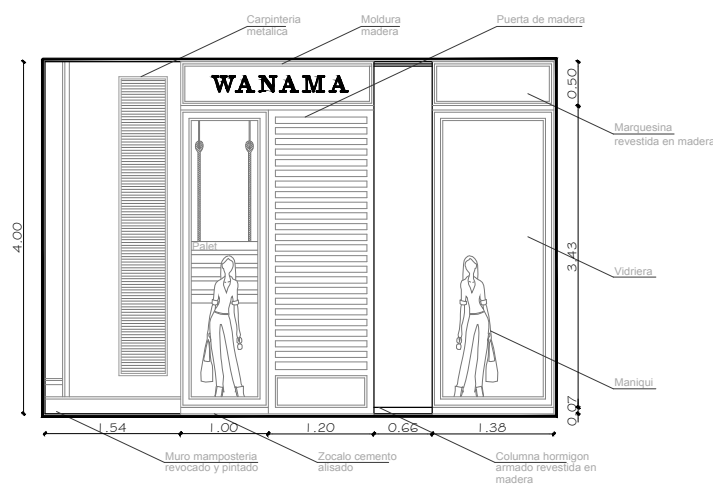
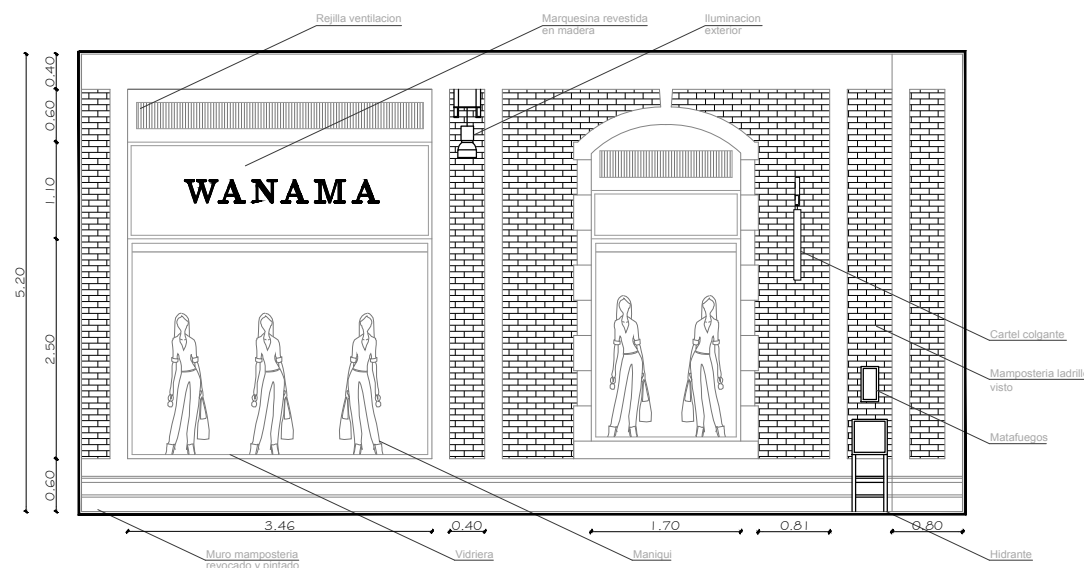


NOTA: Todos los muebles y revestimientos de madera tendran tratamiento ignifugo.
 NOTA: Todos los espejos y vidrios llevaran laminas de seguridad.
 NOTA: Todas las telas tendran tratamiento ignifugo.



NBBO
ARQUITECTOS
 BRANDARIZ+OLIVER

LOCAL COMERCIAL
 WANAMA
 SOLAR DE A ABADIA SHOPPING
 PLANO ARQUITECTURA